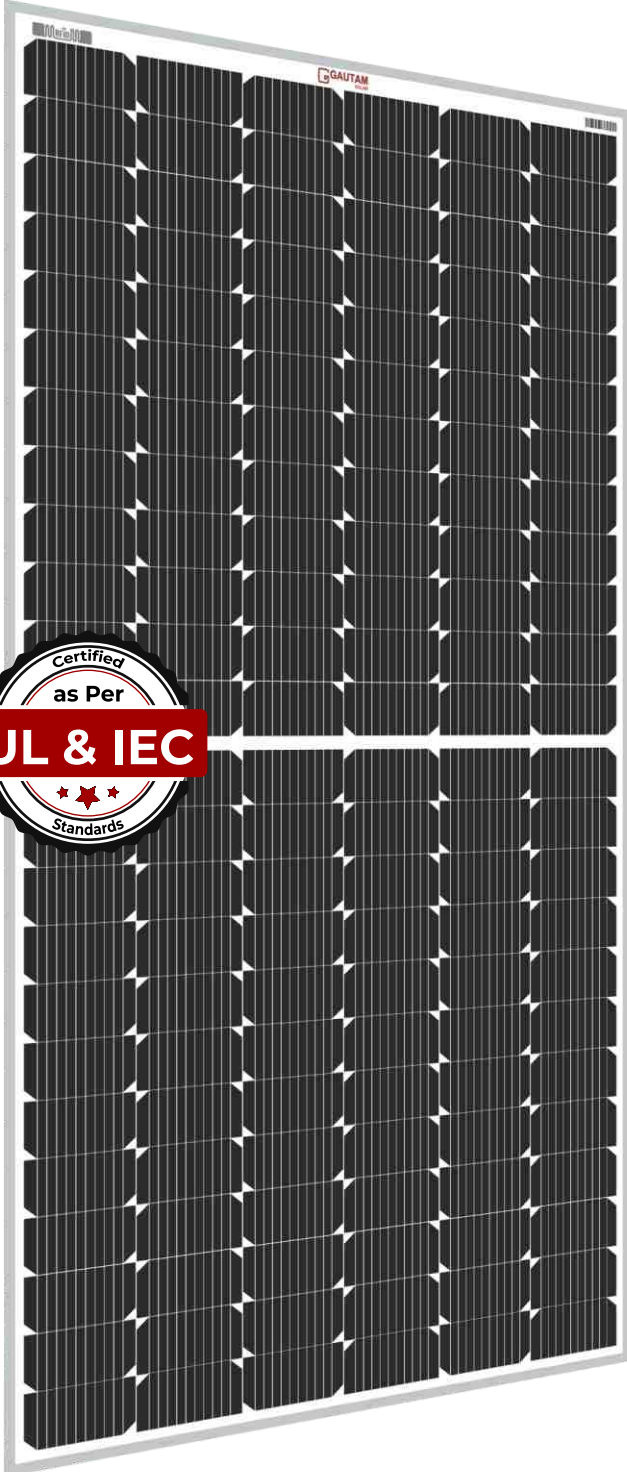


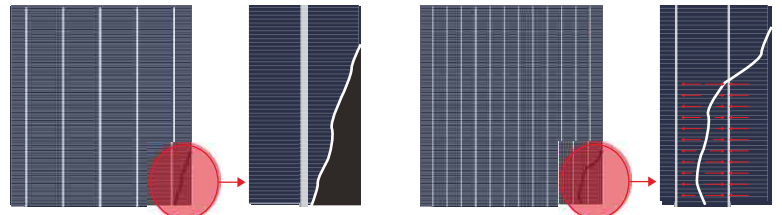
21.68%

Maximum Module Efficiency

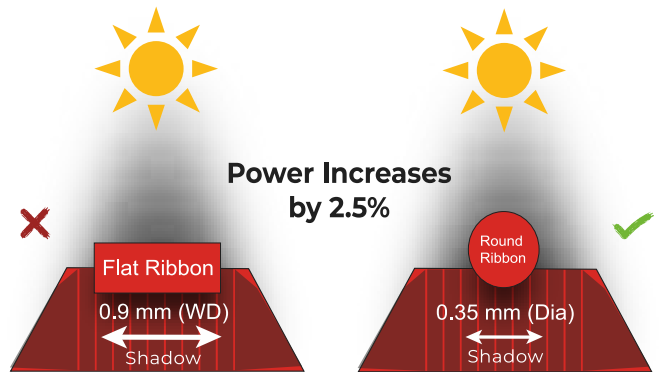
Ideal for **Utility** & **Commercial** Installations



Lower Chances of Micro-Cracks



Round Ribbon for Lower Shading on Cell



ELECTRICAL DATA (STC)

Model No.	G2X1620-UHAD	G2X1635-UHAD	G2X1650-UHAD	G2X1665-UHAD	G2X1680-UHAD
Peak Power Output -Pmax(Wp)	540	545	550	555	560
Power Output Tolerance (Wp)	0 ~ +5	0 ~ +5	0 ~ +5	0 ~ +5	0 ~ +5
Open Circuit Voltage-Voc(V)	49.23	49.34	49.48	49.60	49.70
Maximum Power Voltage-Vmpp(V)	41.80	41.94	42.06	42.16	42.25
Short circuit current-Isc(A)	13.79	13.86	13.92	14.04	14.14
Maximum Power Current-Impp(A)	12.92	13.00	13.08	13.16	13.26
Module Efficiency (%)	20.90	21.10	21.29	21.48	21.68
Fill Factor (%)	79.54	79.70	79.85	79.70	79.69

*(STC) = 1000 W/m² Irradiance, Air Mass 1.5 and 25°C Cell Temperature

ELECTRICAL DATA (NOCT)

Peak Power Output -Pmax(Wp)	401.22	404.94	408.65	412.37	416.08
Open Circuit Current-Voc(V)	45.78	45.89	46.02	46.13	46.22
Maximum Power Voltage-Vmpp(V)	38.25	38.38	38.48	38.54	38.66
Short circuit current-Isc(A)	11.20	11.25	11.30	11.40	11.48
Maximum Power Current-Impp(A)	10.49	10.56	10.62	10.69	10.77

*(NOCT) = 800 W/ m² Irradiance, Air Mass 1.5, Ambient Temperature 20°C and Wind Speed 1 m/s

MECHANICAL DATA

Solar Cells Per Module (units)	144
Cells Configuration (Matrix)	12 × 6 12 × 6
Cell Size(mm)	91 × 182
Length(L) × Width(W) × Thickness(T) in mm	2278 × 1134 × 35
Area of module (sq-m)	2.583252
Weight of module(kg)	27.1 ± 2%

Cell Type	Mono-crystalline PERC (91 × 182)
Junction Box	IP 68 rated Split Junction Box with Individual Bypass Diode
Connector	IP 68 rated MC4 Compatible
Front Cover(Glass)	3.2 mm Low Iron High Transmission AR Coated Tempered Glass
Back Cover (Backsheet)	Poly Vinyl Fluoride (Composite Film)
Encapsulant	PID Free and UV Resistant
Frame	Anodized Aluminum Frame
Application Class Rating	Class A
Safety Class Rating	Class II
Fire Safety	Class C
Mechanical Load	Snow Load 5400 Pa, Wind Load 2400 Pa
Cable Type	4 mm ²

TEMPERATURE RATINGS

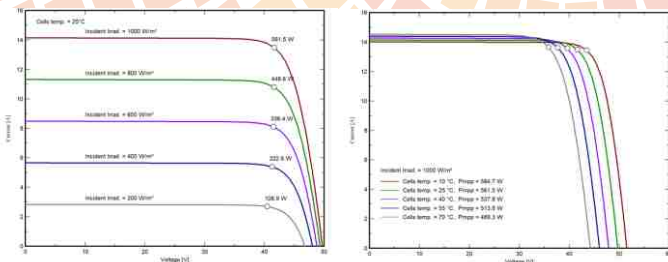
NOCT	45°C ± 2°C
Temperature Coefficient of Pmax	-0.39% /°C
Temperature Coefficient of Voc	-0.30% /°C
Temperature coefficient of Isc	0.06% /°C
Temperature Range	-40°C to +85°C

Maximum System Voltage	1500V DC
Maximum Series Fuse Rating	30A

PACKING CONFIGURATION

Container	40' HQ
Pieces per Pallet	31
Pallets per container	20
Pieces per container	620

Characteristic Curves



Specifications provided in the datasheet are subject to change without Prior notice.

12 Years Product Warranty
25 Years Power Output Warranty

Engineering Drawings

