

21.06%

Maximum Module Efficiency

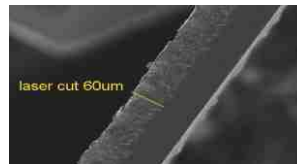
Ideal for Rooftop

Aesthetically Pleasing
for **Premium Rooftop**




Non Destructive Cell Cutting for
Zero Micro Cracks

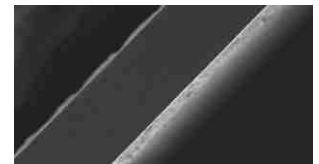
X Manual Laser Cutting



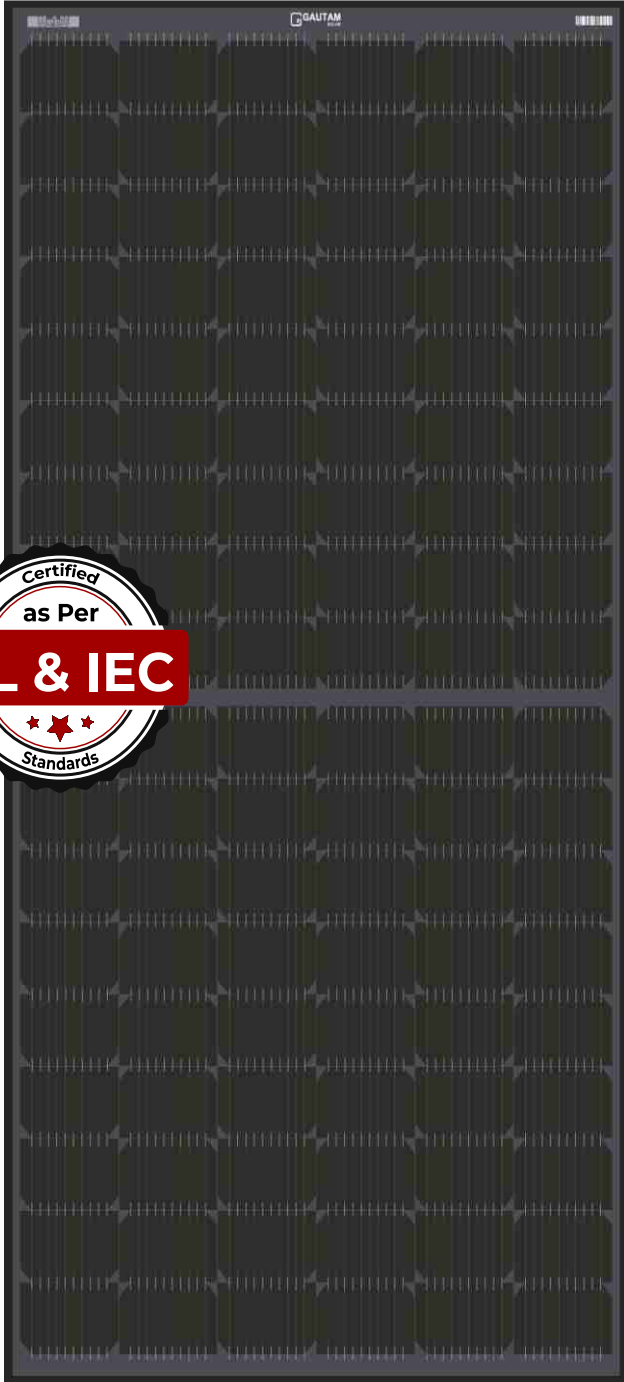
 More than 1500 °C
High Temperature

Non-Destructive Cutting (NDC)

30% More Mechanical Strength 



 Less than 130 °C
Low Temperature



FRONT SIDE ELECTRICAL DATA (STC)				
Model No.	G2X1200B-UHA	G2X1215B-UHA	G2X1230B-UHA	G2X1245B-UHA
Peak Power Output -Pmax(Wp)	400	405	410	415
Power Output Tolerance (Wp)	0 ~ +5	0 ~ +5	0 ~ +5	0 ~ +5
Open Circuit Voltage-Voc(V)	36.90	37.40	37.50	37.90
Maximum Power Voltage-Vmpp(V)	31.40	31.60	31.80	32.00
Short circuit current-Isc(A)	13.62	13.70	13.78	13.86
Maximum Power Current-Impp(A)	12.74	12.82	12.89	12.97
Module Efficiency (%)	20.30	20.55	20.80	21.06
Fill Factor (%)	79.59	79.04	79.34	79.00

*(STC) = 1000 W/m² Irradiance, Air Mass 1.5 and 25°C Cell Temperature

ELECTRICAL DATA (NOCT)				
Peak Power Output -Pmax(Wp)	297.20	300.92	304.63	308.35
Open Circuit Current-Voc(V)	34.32	34.78	34.88	35.25
Maximum Power Voltage-Vmpp(V)	28.73	28.91	29.10	29.28
Short circuit current-Isc(A)	11.06	11.12	11.19	11.25
Maximum Power Current-Impp(A)	10.34	10.41	10.47	10.53

*(NOCT) = 800 W/m² Irradiance, Air Mass 1.5, Ambient Temperature 20°C and Wind Speed 1 m/s

TOTAL POWER (FRONT+BACK)					
With 10% Gain	Peak Power (Wp)	440	446	451	457
	Efficiency η_h (%)	22.32	22.63	22.88	23.19
With 15% Gain	Peak Power (Wp)	460	466	472	477
	Efficiency η_h (%)	23.34	23.64	23.95	24.20
With 20% Gain	Peak Power (Wp)	480	486	492	498
	Efficiency η_h (%)	24.35	24.66	24.96	25.27
With 25% Gain	Peak Power (Wp)	500	506	513	519
	Efficiency η_h (%)	25.37	25.67	26.03	26.33
With 30% Gain	Peak Power (Wp)	520	527	533	540
	Efficiency η_h (%)	26.38	26.74	27.04	27.40

MECHANICAL DATA				
Solar Cells Per Module (units)	108			
Cells Configuration (Matrix)	9 × 6 9 × 6			
Cell Size(mm)	91 × 182			
Length(L)× Width(W)× Thickness(T) in mm	1738 × 1134 × 35			
Area of module (sq-m)	1.970892			
Weight of module(kg)	21.5 ± 2%			

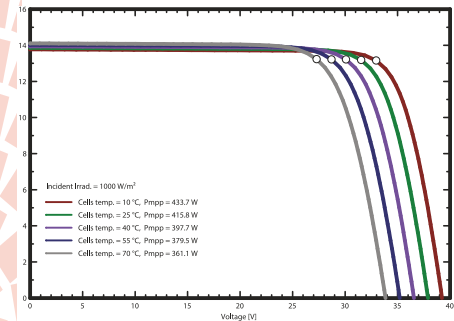
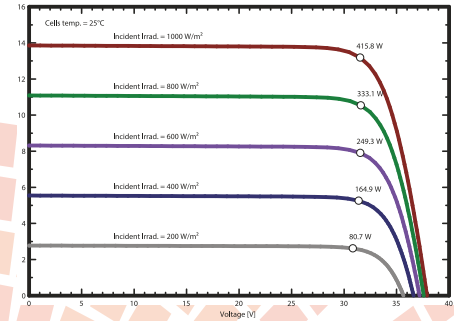
Cell Type	Mono-crystalline PERC (9 \times 6 9 \times 6)
Junction Box	IP 68 rated Split Junction Box with Individual Bypass Diode
Connector	IP 68 rated MC4 Compatible
Front Cover(Glass)	3.2 mm Low Iron High Transmission AR Coated Tempered Glass
Back Cover (Backsheet)	Poly Vinyl Fluoride/Transparent Backsheet (Composite Film)
Encapsulant	PID Free and UV Resistant
Frame	Black Anodized Aluminum Frame
Application Class Rating	Class A
Safety Class Rating	Class II
Fire Safety	Class C
Mechanical Load	Snow Load 5400 Pa, Wind Load 2400 Pa
Cable Type	4 mm ²

TEMPERATURE RATINGS	
NOCT	45°C ± 2°C
Temperature Coefficient of Pmax	-0.39% /°C
Temperature Coefficient of Voc	-0.30% /°C
Temperature coefficient of Isc	0.06% /°C
Temperature Range	- 40°C to + 85°C

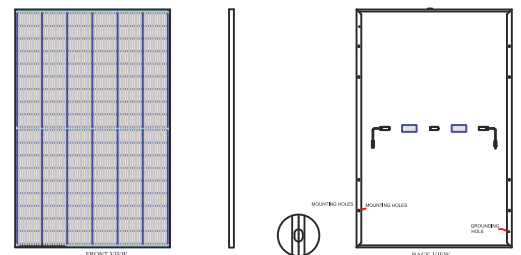
Maximum System Voltage	1500V DC
Maximum Series Fuse Rating	30A

PACKING CONFIGURATION	
Container	40' HQ
Pieces per Pallet	36
Pallets per container	26
Pieces per container	936

Characteristic Curves



12 Years Product Warranty
25 Years Power Output Warranty
Engineering Drawings



SECTION VIEW

Specifications provided in the datasheet are subject to change without Prior notice.